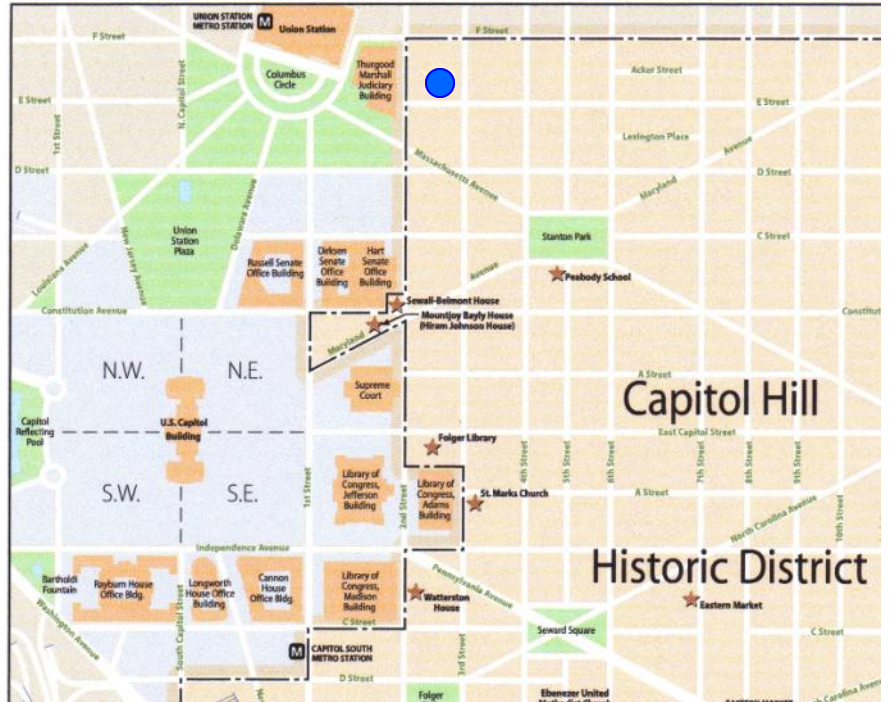
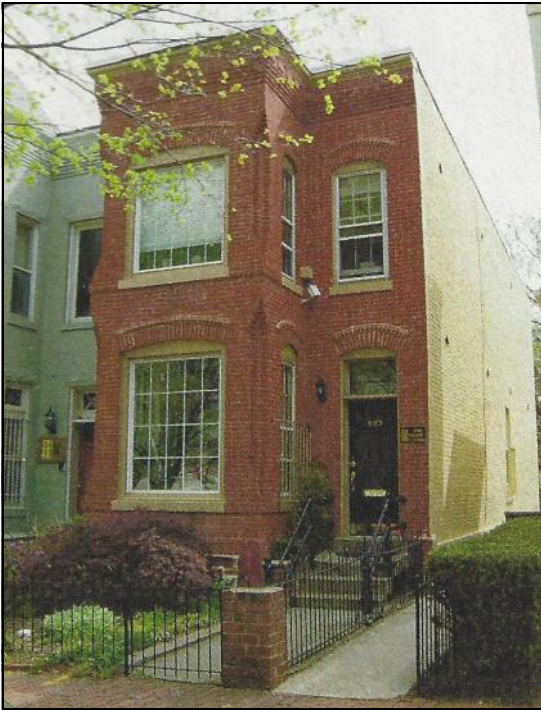


# 503 2nd Street NE Washington, DC 20002



## Location:

Prestige location on Senate Side across from Judiciary Building and Union Station. Walk to Senate and US Capitol.

## Description:

Renovated 3 level Victorian townhouse/lobbyist office. Exposed brick walls, skylights, custom design/architecture features.

First floor: Reception area, 2 offices, fireplace, half bath, wet bar.  
Second floor: Conference room, 2 office suites, full bath & kitchenette.  
Lower level: Office, open work space, kitchenette, full bath.

**Sale Price:** \$1,500,000

**Contact:** Coldwell Banker Real Estate 605 Pennsylvania Ave SE, WDC 20003 547-3525  
Kitty Kaupp 202-255-0952 kkaupp@cbmove.com  
Tati Kaupp 202-255-6913 tkaupp@cbmove.com

**Website:** [www.kittykaupp.com](http://www.kittykaupp.com)



Seller reserves the right to accept, counter or reject any offer at any time. Information deemed reliable but not guaranteed.



# 503 2nd Street NE Washington, DC 20002

**Square Footage:** TOTAL GBA: 2,214 SF  
 First Floor: 738 SF  
 Second Floor: 738 SF  
 English Basement: 738 SF

**Zoning:** C2A CAP Overlay

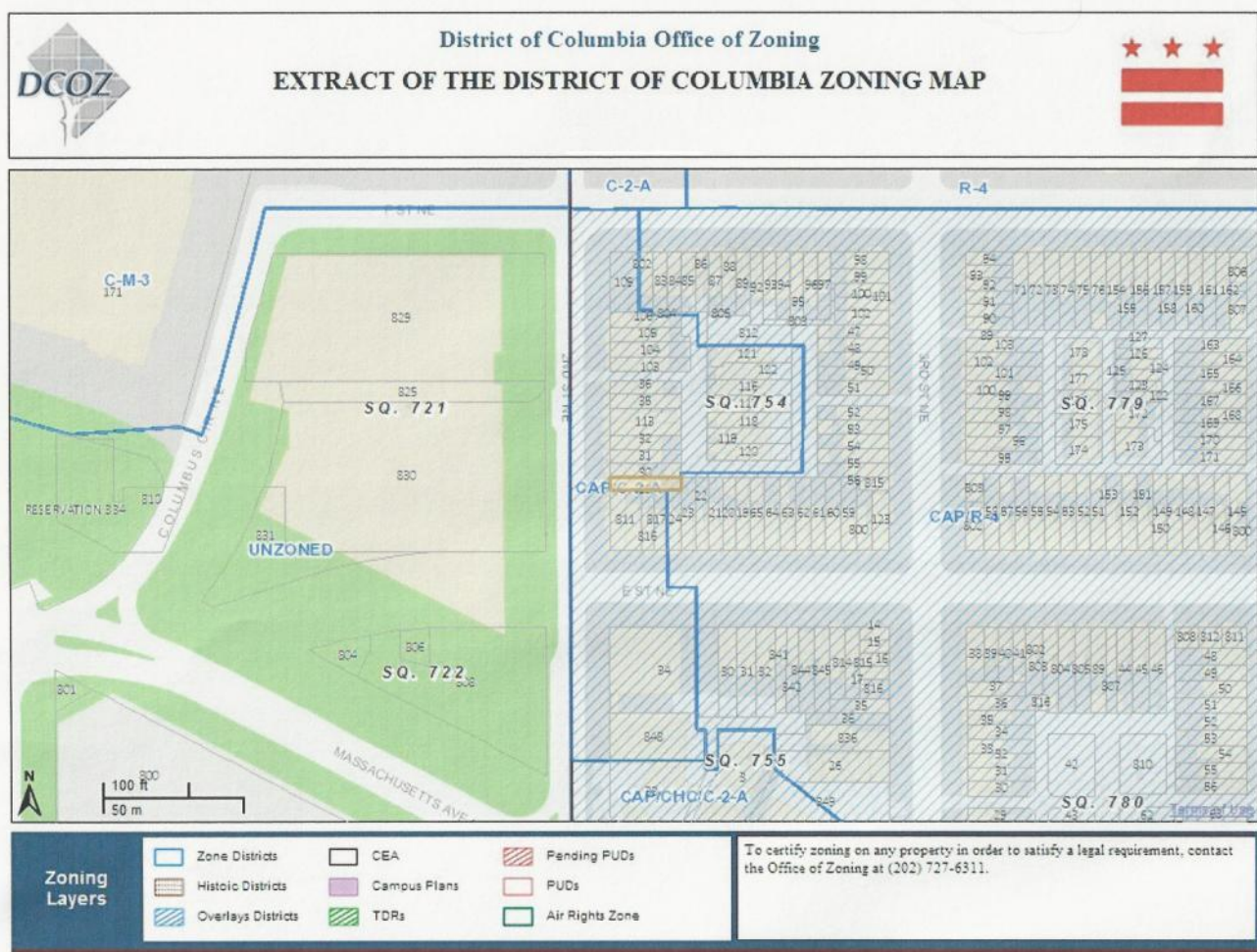
**Legal Description:** Lot 0029, Square 0754

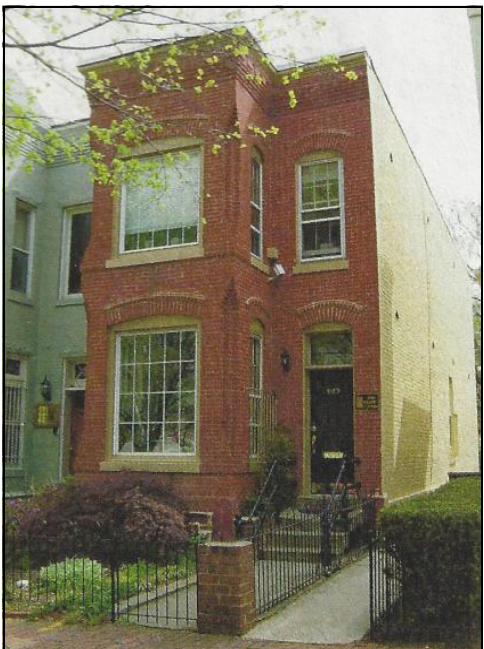
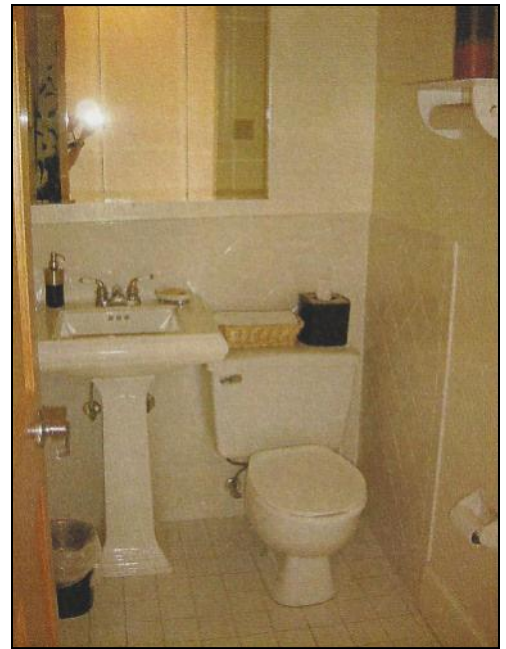
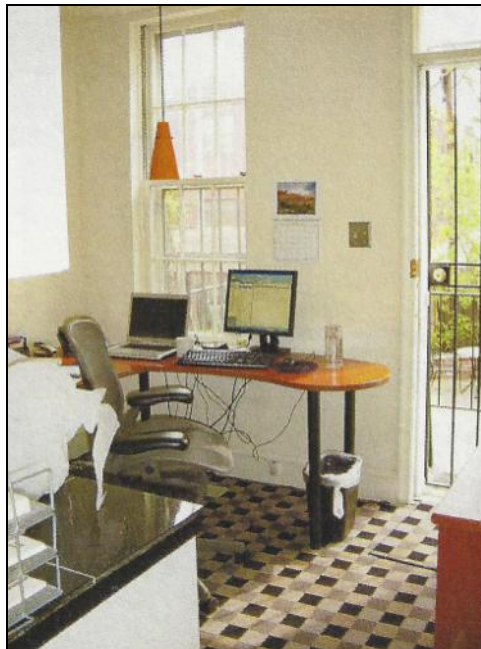
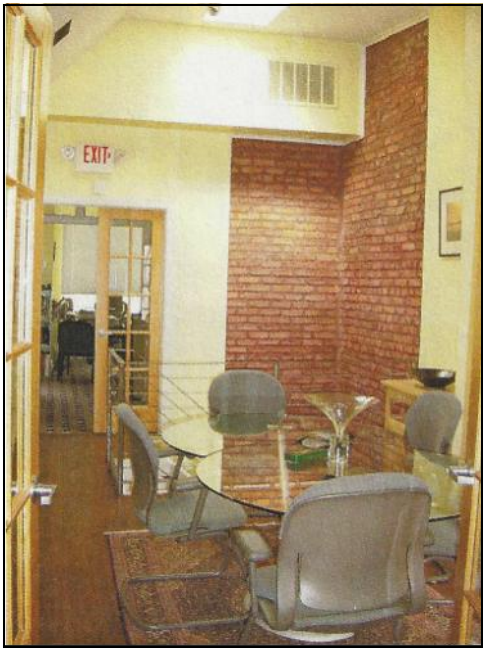
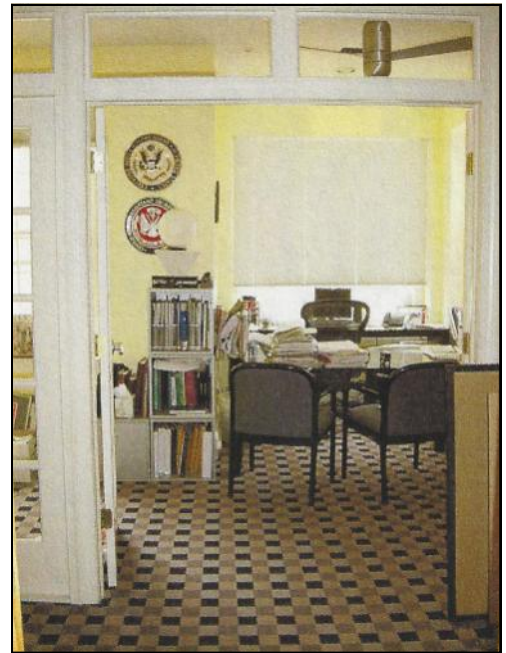
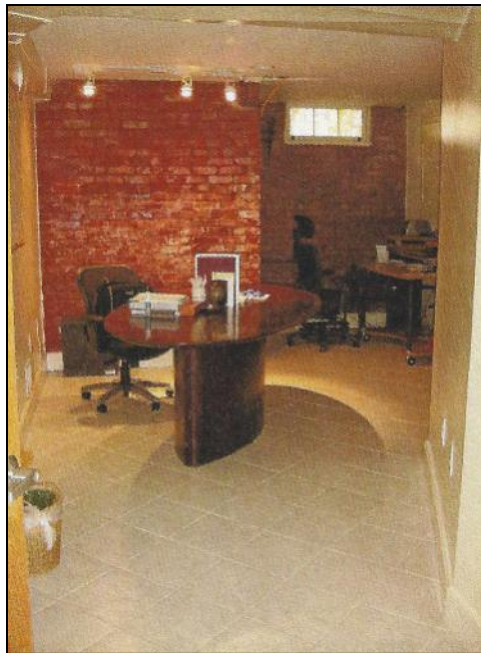
<b>Property Tax :</b>	<b>Current 2011</b>	<b>Proposed 2012</b>
Land:	\$406,500	\$406,500
Improvements:	\$654,730	\$702,840
Total Value:	\$1,061,230	\$1,109,340
Taxable assessment:	\$1,061,230	\$1,109,340

**Parking:** 2 parking spaces

**Building Systems:** 2 HVAC systems, ceiling fans, 200 amp line, T-1 wired

**Transportation:** 1 Block to Union Station Metro, Amtrak, Rail.







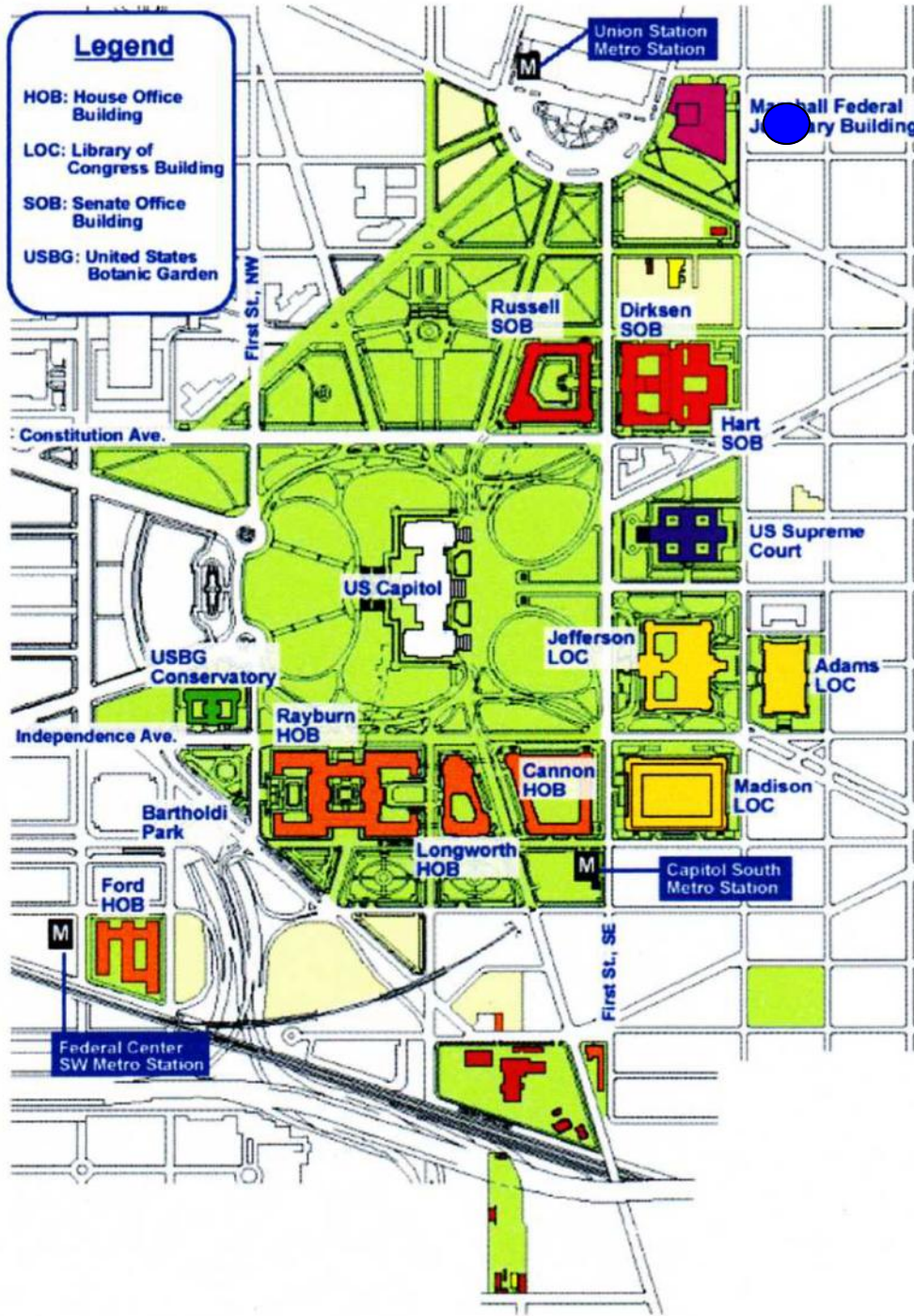
# Map of the Capitol Complex

## Related Links

- U.S. Capitol
- Russell Senate Office Building
- Dirksen Senate Office Building
- Hart Senate Office Building
- Cannon House Office Building
- Longworth House Office Building
- Rayburn House Office Building
- U.S. Botanic Garden

## Related Maps

- Entrances to the Capitol and the Congressional Office Building
- Map of the Capitol Complex
- Map of the Capitol Grounds



Union Station & Metro

503 2nd Street NE



Cannon House Office Building



US Supreme Court



Library of Congress & Metro



Eastern Market & Metro



Rayburn House Office Building



Hart Senate Office Building



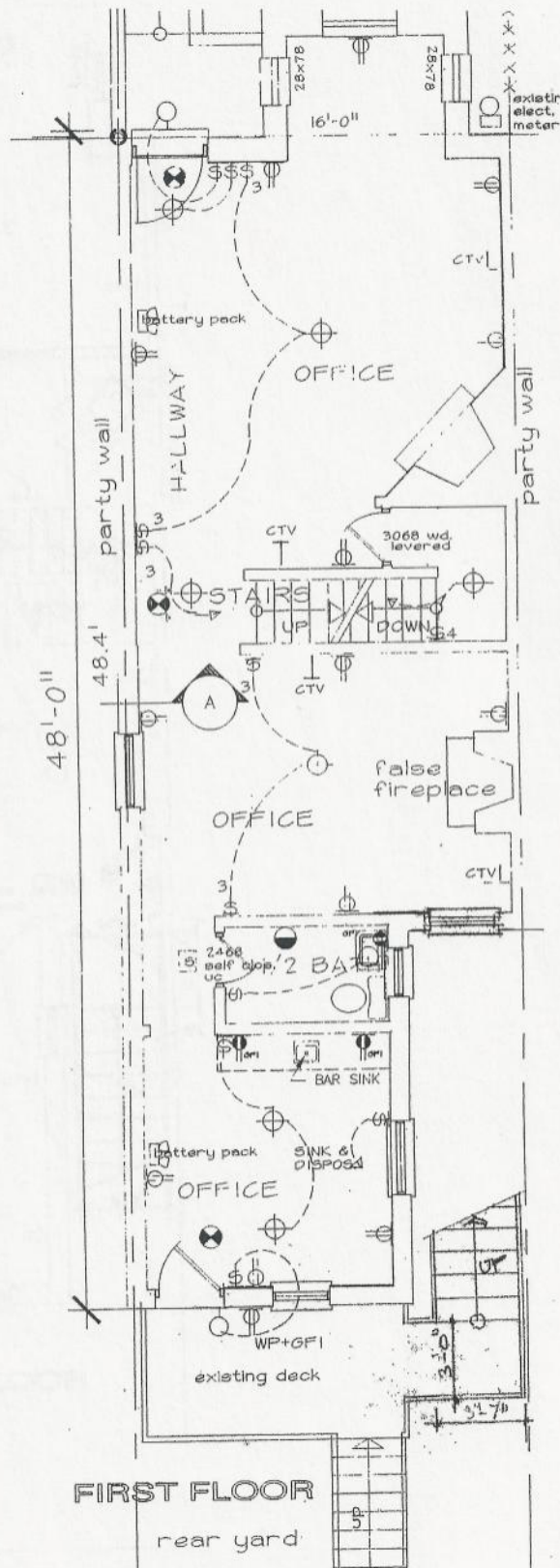
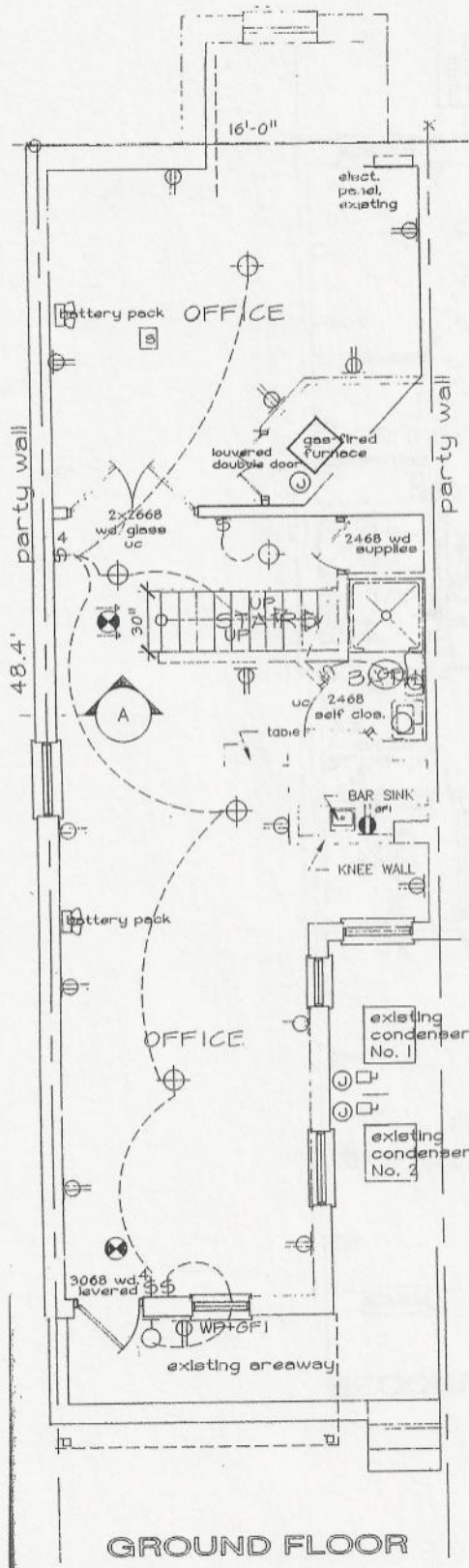
Dirksen Senate Office Building



Russell Senate Office Building



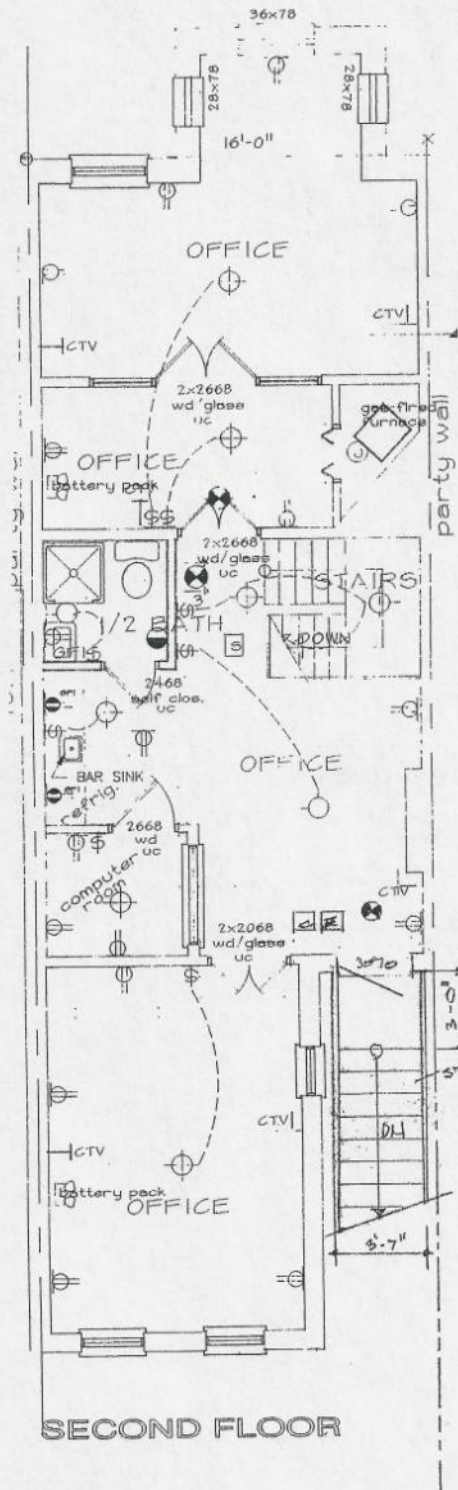
Longworth House Office Building



GROUND FLOOR

FIRST FLOOR

rear yard

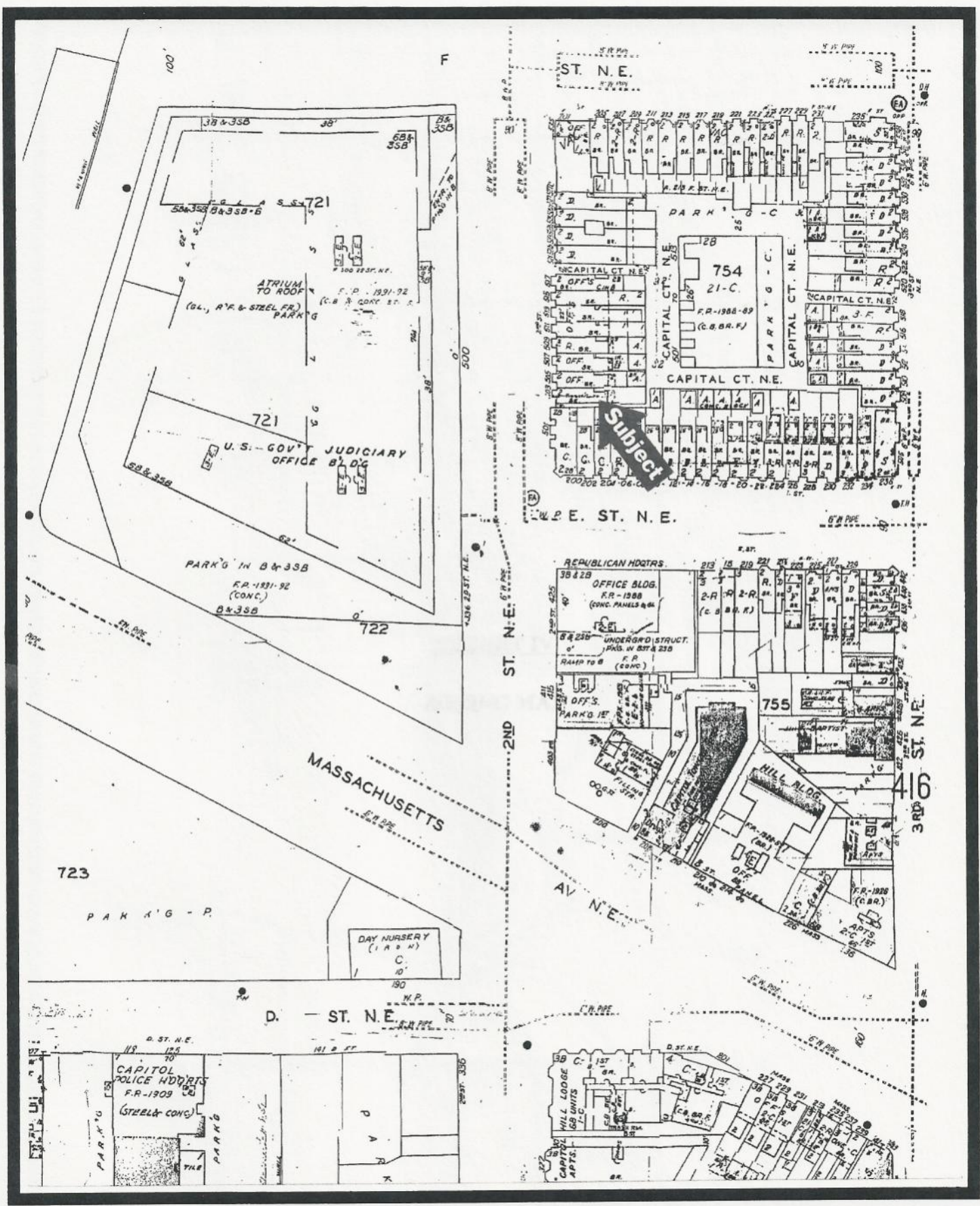


SECOND FLOOR



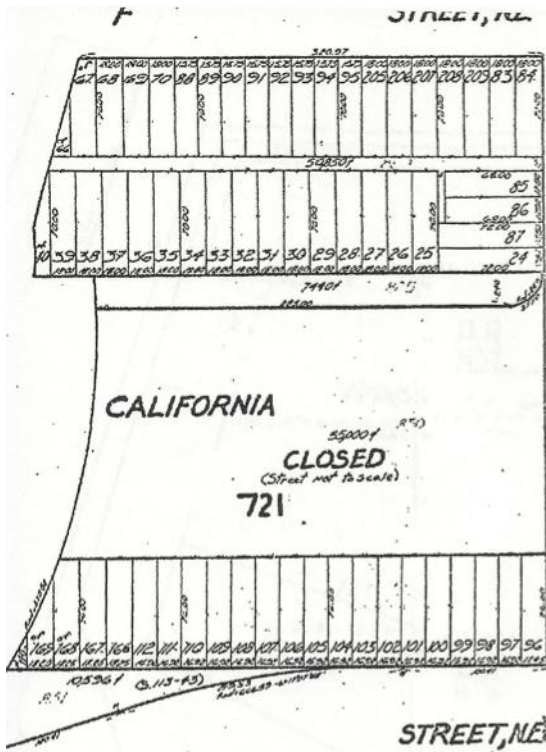
Seller reserves the right to accept, counter or reject any offer at any time. Information deemed reliable but not guaranteed.



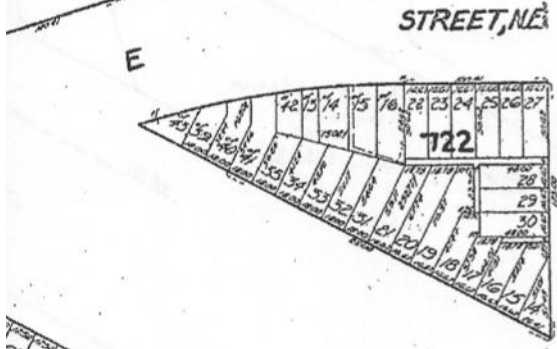
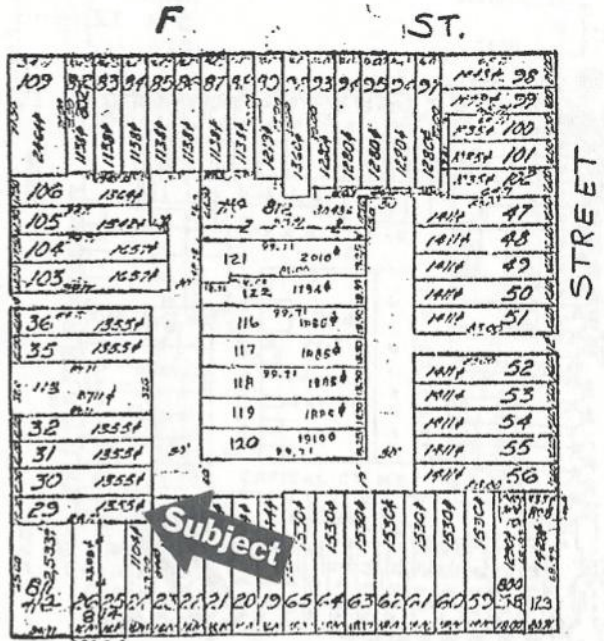


Seller reserves the right to accept, counter or reject any offer at any time. Information deemed reliable but not guaranteed.

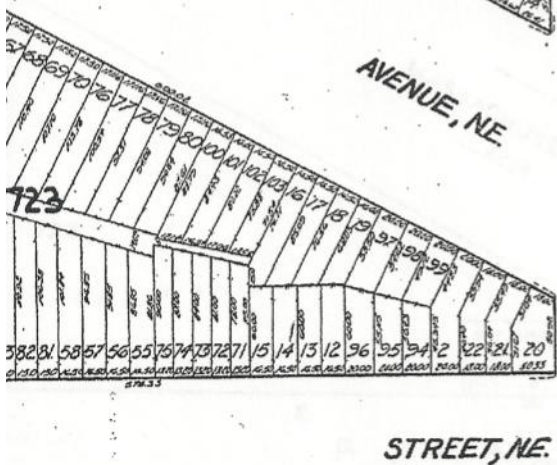




SQ. 754  
STREET, NE



SQ. 755



SQ. 756



Seller reserves the right to accept, counter or reject any offer at any time. Information deemed reliable but not guaranteed.

